

AXESS 4 ALL
 Unit 3F, Hamilton Industrial Park,
 Waverade Road, Leicester, LE5 7TL
 Telephone: 0870 2410602
 Facsimile: 0870 2410619

Notes
Technical Information
 Safe working load = 300 Kg
 Total unit weight = 230 Kg
 Maximum Travel = 20mm per second
 (935mm if fitted in a pit)
 Lift Speed = 1 : 6
 Ramp Gradient = 230v ac 50 HZ Single Phase & Earth
 Power Consumption = 240 Watts
 Lift Operating Voltage = 24v
 Battery Powered Raise & Lower
 Manual Emergency Lowering
 Hydraulic Drive
 Built in compliance with BS 6440 : 1999
 Suitable for Internal & External use.

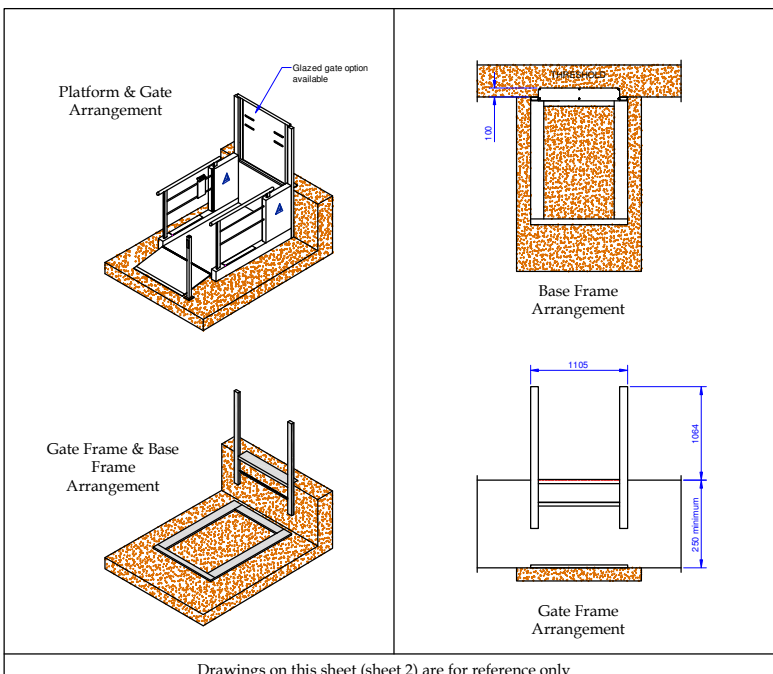
Technical Services
 Wall mounted lockable isolator to be supplied and fitted by others. It must be within 5 metres of upper gate.
 A&A wiring from isolator to machine is surface fixed as standard.
 See plan view for suggested isolator position.

Upper Level Gate
 The Standard gate opening is 900mm
 Minimum travel required to fit gate is 250mm

External Applications
 A lift supplied for external applications should wherever possible, be installed with its base flush with, or above, the level of the surrounding ground, and on a standing which will remain free from accumulations of water.
 Should the client wish to have a lift installed outdoors, with a pit, it is a condition of supply that the client ensures that such a pit remains properly drained at all times.
 Axess 4 All reserves the right to decline warranty claims arising from any accumulation of water within such a pit or base.

Drawn by	S. Dewar	Date	12.06.08
Checked by	S. Pawley	Date	12.06.08
Sheet	ONE	of	THREE

Site Name: A2000 - 900 -
TYPICAL 2



AXESS 4 ALL
 Unit 3F, Hamilton Industrial Park,
 Waverade Road, Leicester, LE5 7TL
 Telephone: 0870 2410602
 Facsimile: 0870 2410619

Notes
 The lift applies a maximum load of 8KN to the base
 A concrete base is recommended with a minimum depth of 150mm
 A concrete threshold is recommended with a thickness depth of 250mm, however if concrete is not available, then a timber frame can be utilized, for details see sheet 3.
 The base and threshold must have a smooth finish and be level to within 5mm
 A clear area of 1500mm square is recommended at the entrance and exit points of the lift for access
 A minimum of 2000mm is required above the threshold height.
 Threshold must be able to withstand a 1kN fixing, when the gate option is fitted.

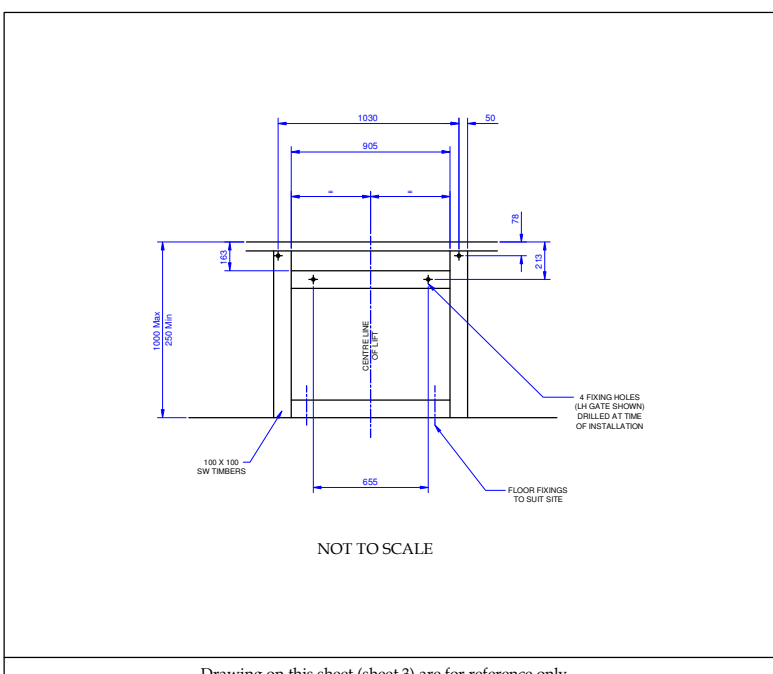
Pit Sizes (if required)
 Length with gate = 1595mm
 Width with gate = 1404mm
 Depth = 60 - 65mm
 For external pit, please fit adequate drainage.

Colours
 Platform, Framework and Steel gate to be coloured Blue 700 Sable.

Drawn by	S. Dewar	Date	12.06.08
Checked by	S. Pawley	Date	12.06.08
Sheet	TWO	of	THREE

Site Name: A2000 - 900 -
TYPICAL 2

Drawings on this sheet (sheet 2) are for reference only



AXESS 4 ALL
 Unit 3F, Hamilton Industrial Park,
 Waverade Road, Leicester, LE5 7TL
 Telephone: 0870 2410602
 Facsimile: 0870 2410619

Drawn by	S. Dewar	Date	12.06.08
Checked by	S. Pawley	Date	12.06.08
Sheet	THREE	of	THREE

Site Name: A2000 - 900 -
TYPICAL 2

Drawing on this sheet (sheet 3) are for reference only